

Stücki Park House H

Basel, Switzerland

 **Lindner**



© www.Lindner-Group.com

Project Description

With the doubling of the laboratory and office space, Stücki Park in North Basel is a new economic hub for life sciences: Over an area exceeding 60.000 m² – by the end of 2023 – the park will unite research-oriented businesses as well as medicine, hospitality, and leisure in an inspiring environment. Beyond professional use, the area will also be enriched by approximately 40 shops and service providers, turning the park into a destination for experiences, health, and shopping.

As part of the fit-out of Building H, the office structure was equipped with innovative wall systems by Lindner, including the digital reception area on the first floor. Lindner delivered a range of tailor-made solutions: movable partition walls with a melamine resin coating and black lacquered glass, as well as wooden partition walls with an elegant, white melamine resin-coated surface. These elements not only ensure privacy and effective space separation but also contribute to improved room acoustics. Complementing the partitions, laboratory doors with aesthetic glass inserts were installed, accentuating the modern design concept. Furthermore, to ensure the highest fire safety standards, automatic fire protection sliding doors were installed.

General

Building Type	Office buildings
Company Division	Lindner SE Branch Opfikon
Completion	2023
Partner	Halter AG, Münchenstein

Completed Works

- **Partitions**

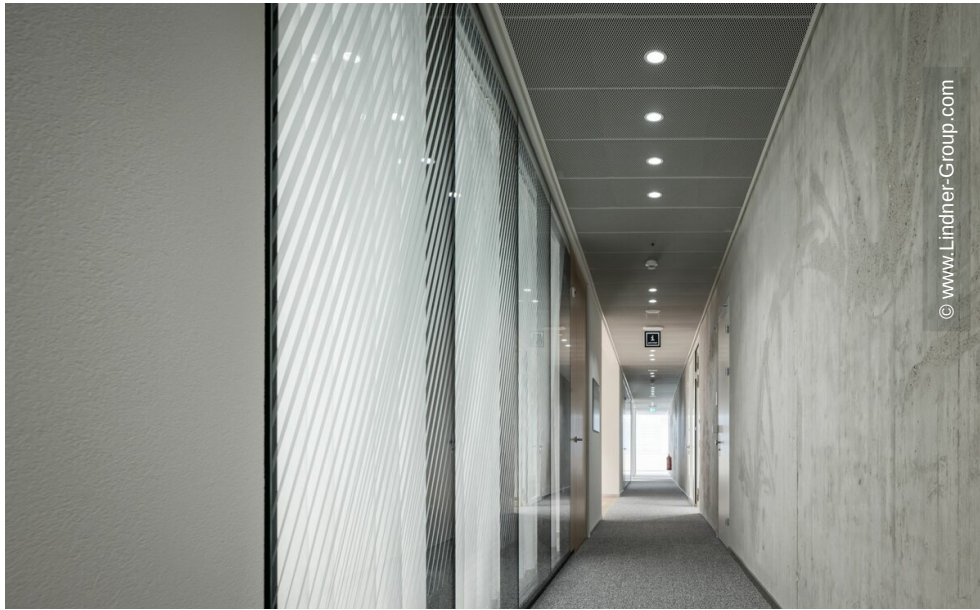
- Partition Systems Full Panel
 - Lindner Logic 100 Metal
- Partition Systems Glass
 - Lindner Life Freeze 137
 - Lindner Life Stereo 125
- Wall and ceiling panels
 - Lindner Free Timber

- **Doors**

- Doors for Partition Systems
 - GTB 100
- Wooden doors
- Sliding doors

- Plasterboard partition systems





© www.Lindner-Group.com



© www.Lindner-Group.com



© www.Lindner-Group.com



© www.Lindner-Group.com





