

# Schüco One

Bielefeld, Germany





# Project Description

Schüco One is the new headquarters of Schüco International KG, designed and realised by the renowned architecture firm 3XN Architects from Copenhagen. Spanning an area of nearly 7,200 m<sup>2</sup>, this modern office building impresses with its dynamic shape and promotes collaboration and creativity among employees through open workspaces. In addition to its architectural design, particular emphasis was placed on sustainability and innovation during construction: as the world's first building, the new headquarters is striving for all three major sustainability certifications – LEED, BREEAM, and DGNB.

The Lindner Group undertook several key trades in the realisation of Schüco One: in the area of dry construction, modern, flexible solutions were implemented to support the open spatial structures and acoustic requirements. Metal ceiling sails further enhance the atmosphere with excellent sound absorption and appealing design.

In the flooring sector, Schüco opted for visually appealing Lindner systems that impress with their easy maintenance of the underlying installations. The NORTEC raised floor stands out for its excellent sound insulation and high load-bearing capacity. Furthermore, the non-combustible calcium sulphate boards achieve the highest ecological standards through the use of pre- and post-consumer recycled paper. Additionally, the FLOOR and more<sup>®</sup> hollow floor not only offers outstanding building physics properties but also allows for perfect integration into the open and dynamic workspaces of Schüco One due to its flexible construction.

Lindner's services were complemented by stylish foyer and wooden staircase cladding, conveying warmth and elegance in the entrance area.

Complementary wooden doors with sound and fire protection also highlight the aesthetic and functional requirements of the project.

## General

Building Type	Office Buildings, Facilities for Meetings, Conventions and Conferences, Building certification, Industrial and commercial construction, Others
Company Division	Lindner SE   Fit-Out North.Northwest Germany
Completion	2022
Architect	3XN architects

## Completed Works

- **General Contracting**

- Dry construction works
- Furring Panels
- Plasterboard ceiling systems
- Plasterboard partition systems

- **Ceilings**

- Wall and ceiling panels
- Heated and Chilled Canopy Ceilings
  - Plafotherm® DS 320
- Heated and Chilled Plasterboard Ceilings
  - Plafotherm® GK HEKDA®

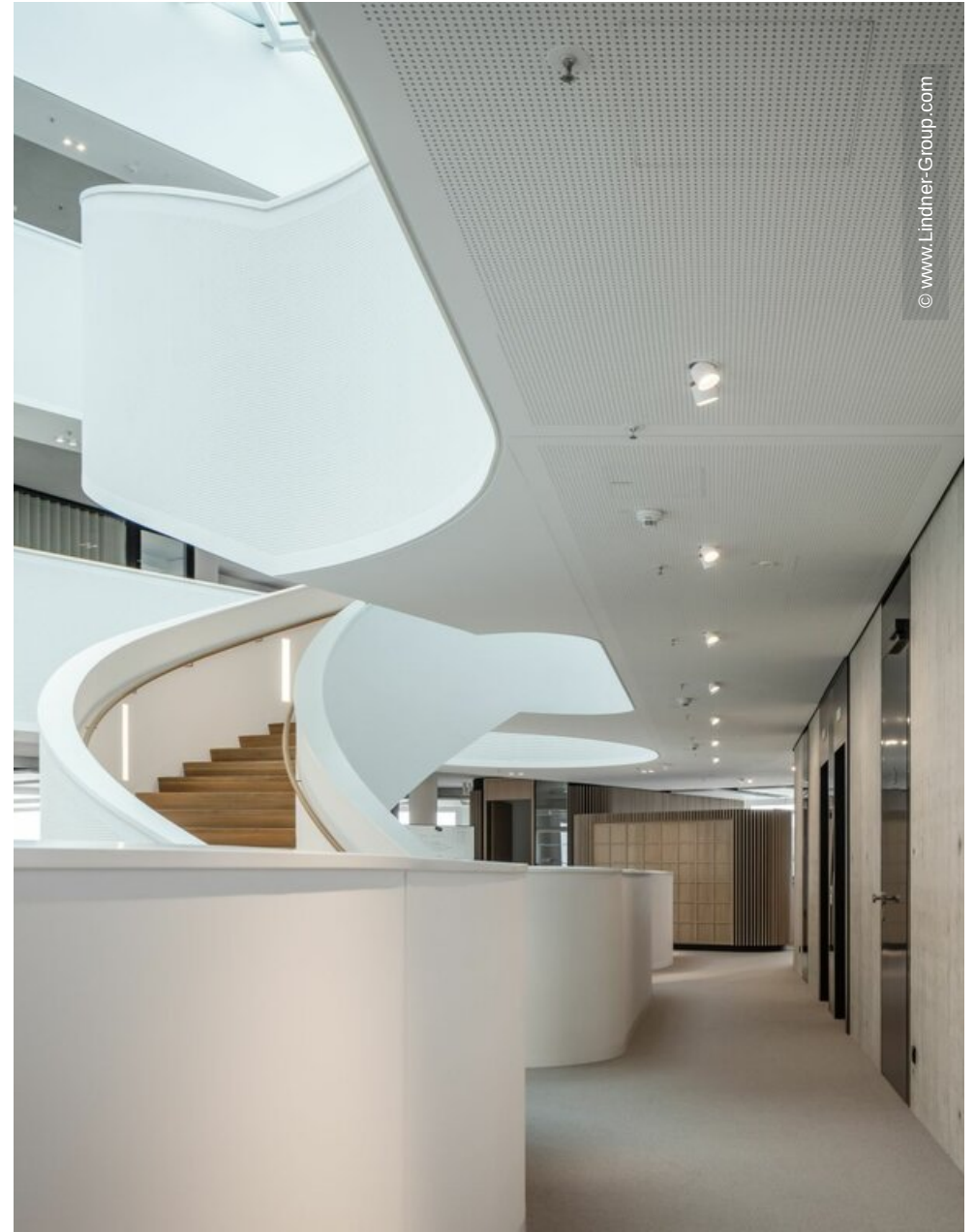
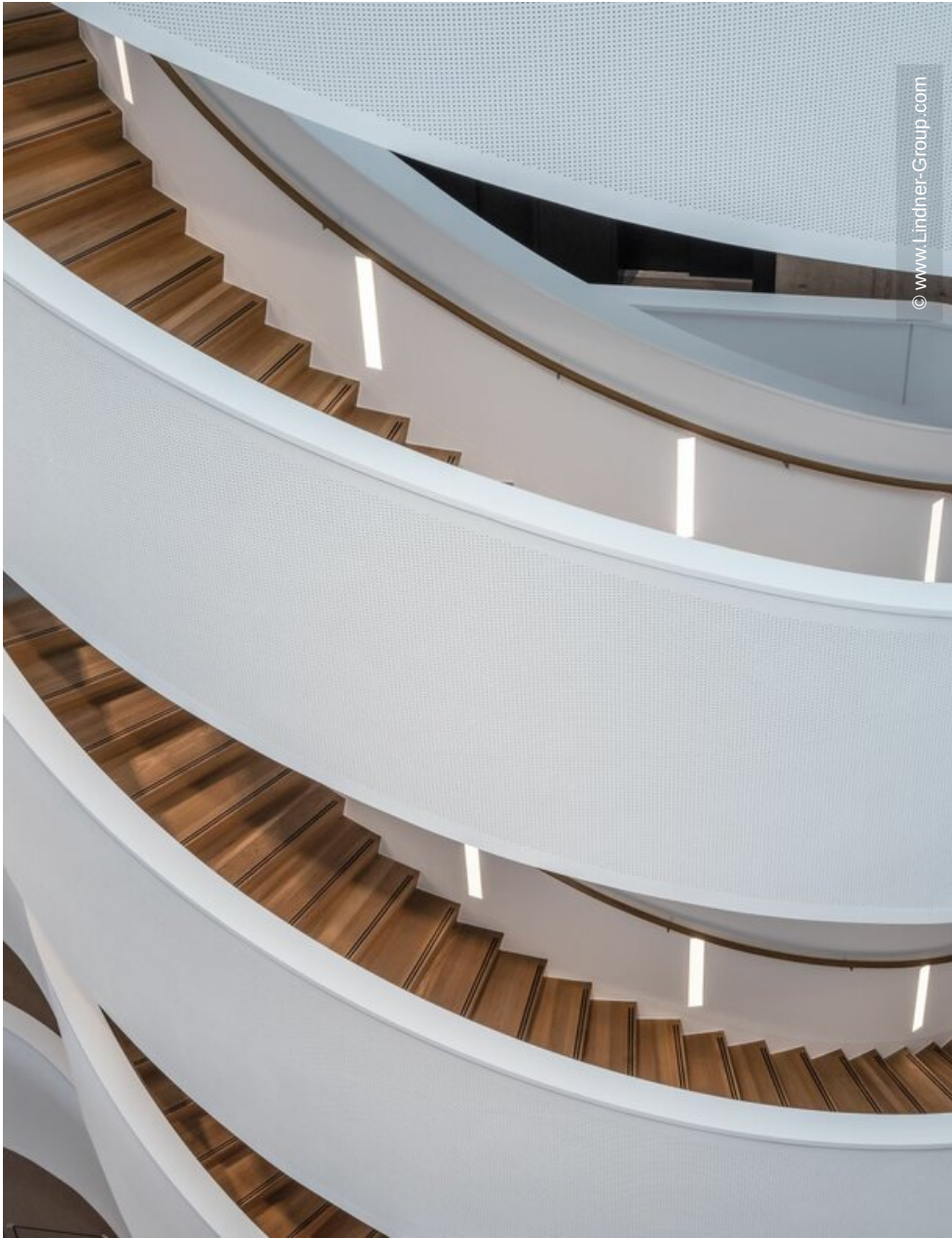
- **Floors**

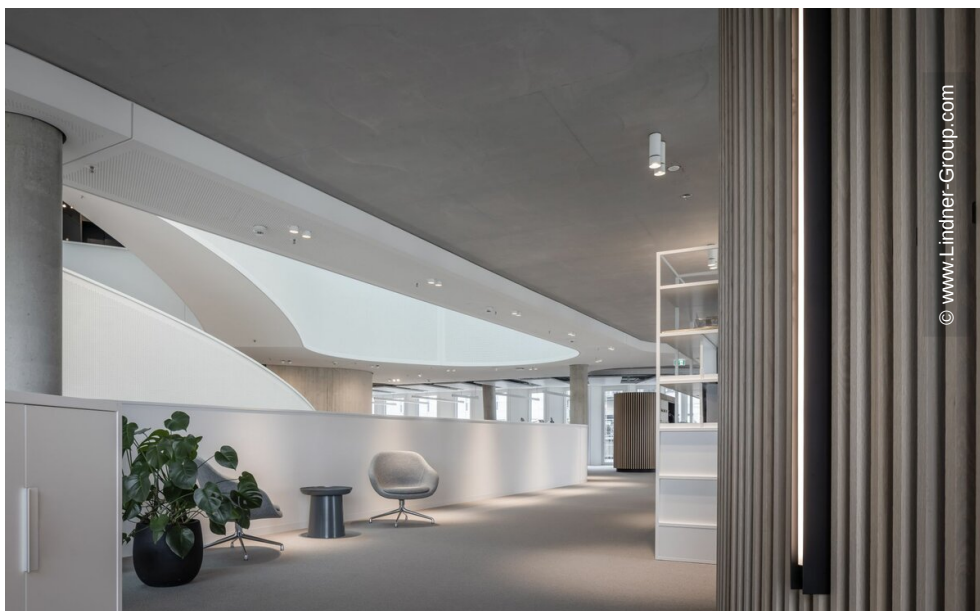
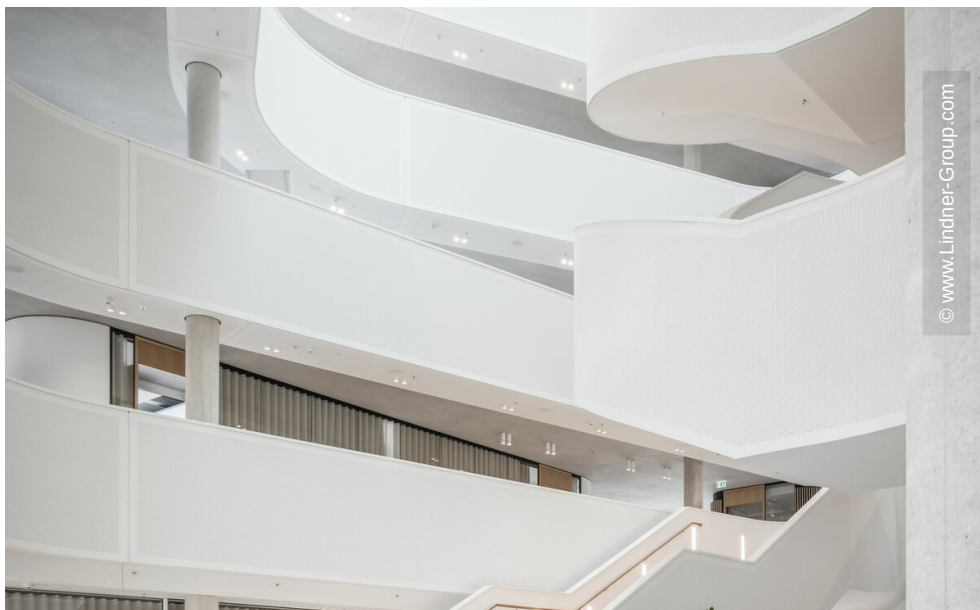
- Calcium Sulphate Panels
  - FLOOR and more®
  - NORTEC

- **Doors**

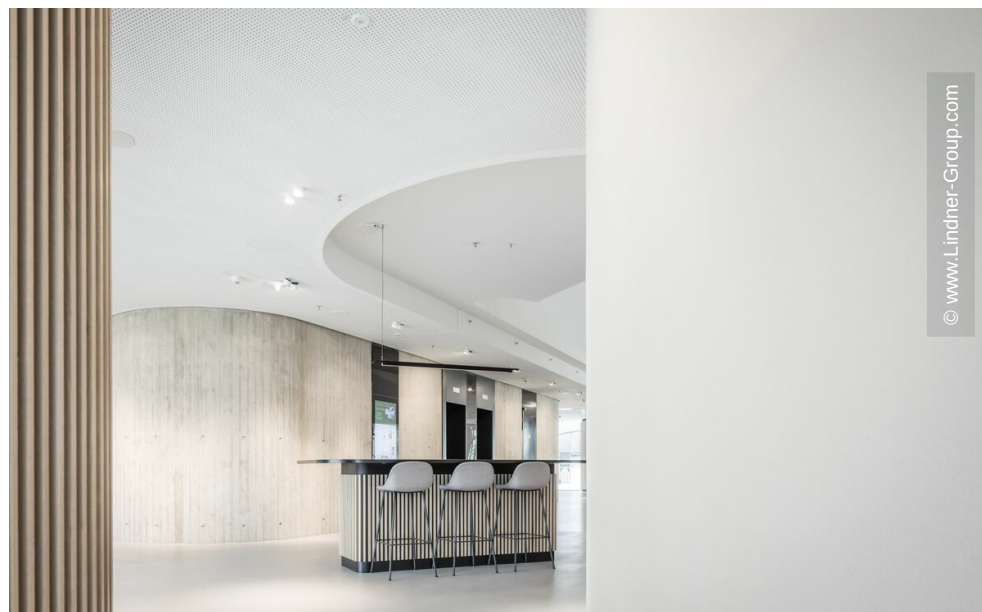
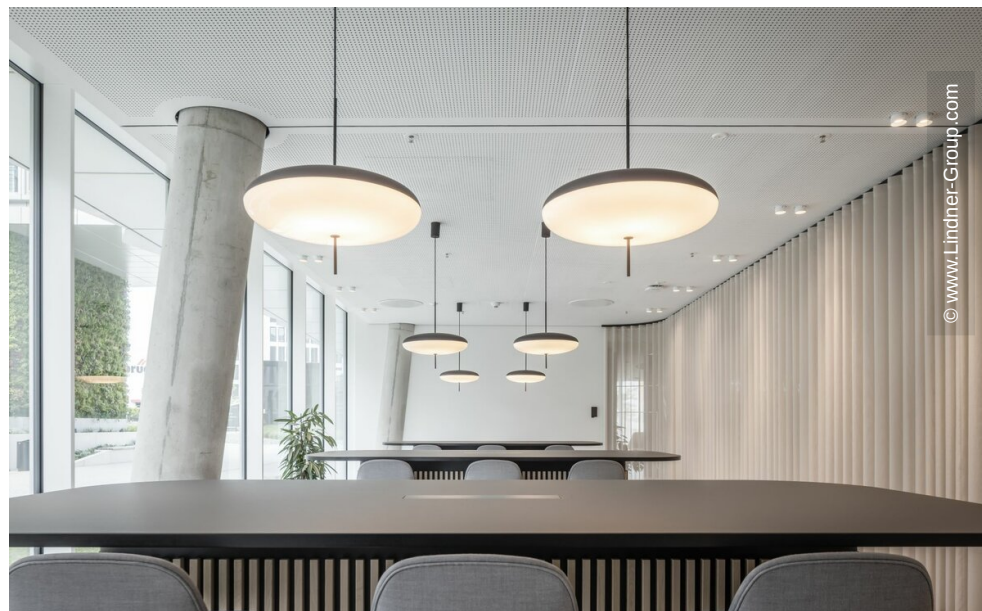
- Wooden doors













© www.Lindner-Group.com



© www.Lindner-Group.com



