

RMV-Headquarters, Seilerbahn Office Building

Hofheim am Taunus, Germany

 **Lindner**



© www.Lindner-Group.com

Project Description

The new headquarters of the Rhein-Main Verkehrsbund (RMV) in Hofheim am Taunus focuses on modern working environments and sustainable architecture.

The building features five full storeys, a staggered storey, and three basement levels, covering an area of 4,000 m². It serves not only as a workplace but also as a communication and event centre for the RMV and its network partners. Shared meeting rooms and open working areas encourage creative, focused, and cross-disciplinary thinking and collaboration. By relocating employees previously spread across two sites into one building, a central hub for cooperation and exchange has been created.

The Lindner Group was involved in the fit-out of office spaces from the ground floor to the fifth floor, supplying customised products that combine functionality and aesthetics. The Lindner Life Pure 620 and Life Clear glass partitions installed along the corridors are distinguished by their post-free glazing, creating light-filled rooms. These partitions are complemented by delicate GTB 10 all-glass doors or ATB 42 acoustic doors with surrounding aluminium frames. To ensure a degree of privacy and separation in the highly transparent office spaces, the glass surfaces were designed with opaque patterns that depict public transport, among other things, and visually reflect RMV's themes.

General

Building Type	Office Buildings, Facilities for Meetings, Conventions and Conferences, Industrial and commercial construction
Company Division	Lindner SE Partitions

Completion

2023

Tenant

Rhein-Main-Verkehrsbund (RMV)

Completed Works

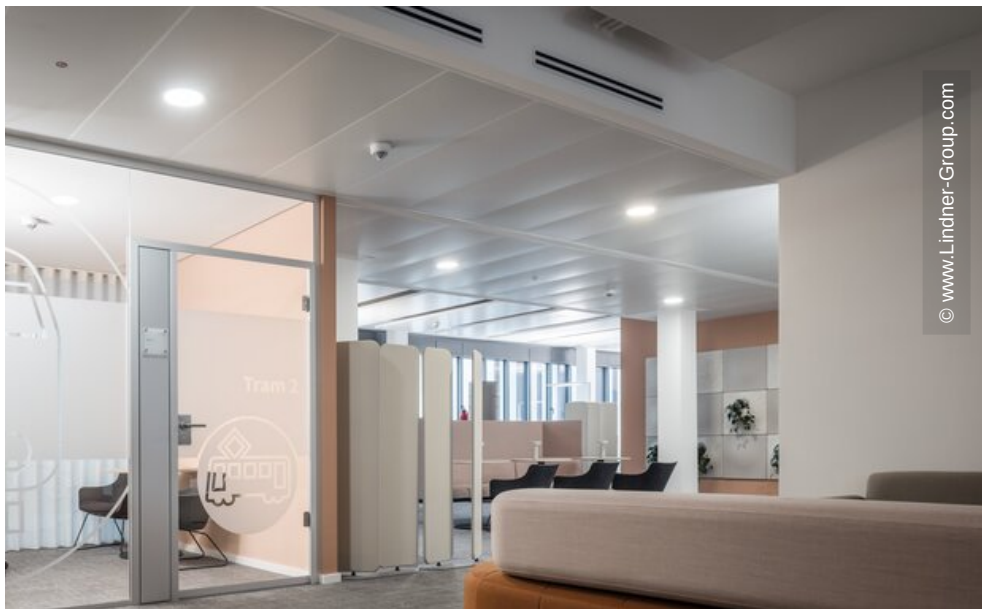
- **Partitions**

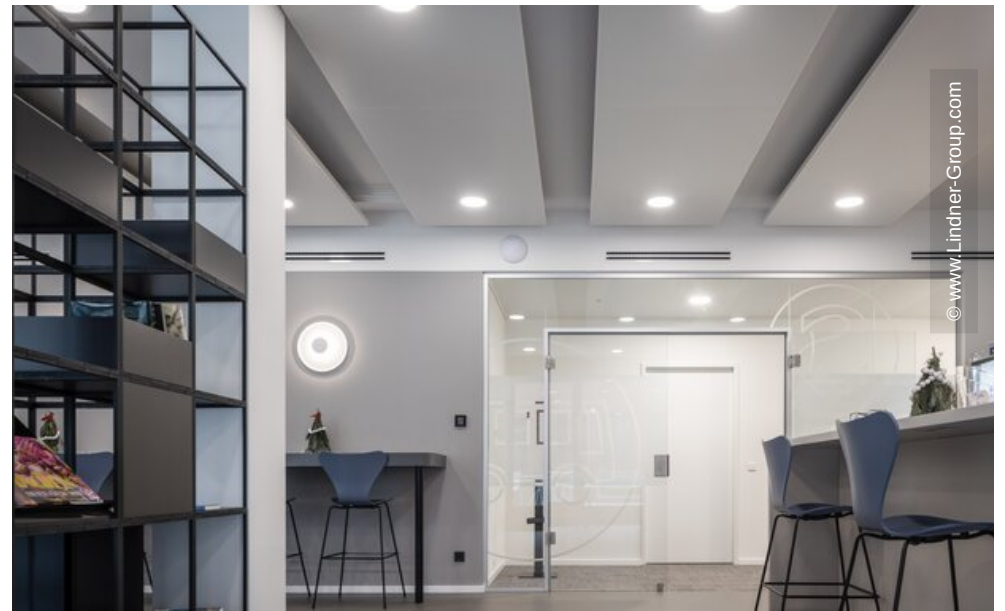
Partition Systems Glass
Lindner Life Pure 620
Lindner Life Clear

- **Doors**

Glass doors
GTB 10
Aluminium Tubular Frame Doors
ATB 42









© www.Lindner-Group.com



© www.Lindner-Group.com