

New Office Building Hans Künz

Hard, Austria





Project Description

Hans K nzt. has expanded its industrial site in Hard with a modern office building that combines traditional mechanical engineering expertise with a forward-thinking working environment. Instead of fixed office layouts, the building features a flexible design and a pleasant working atmosphere, with short distances, warm wooden ceilings, and light-filled rooms. The open, gallery-style design creates seamless transitions between work and communication areas. Internal exchange and collaboration are prioritised, while concentration and quiet work are also possible.

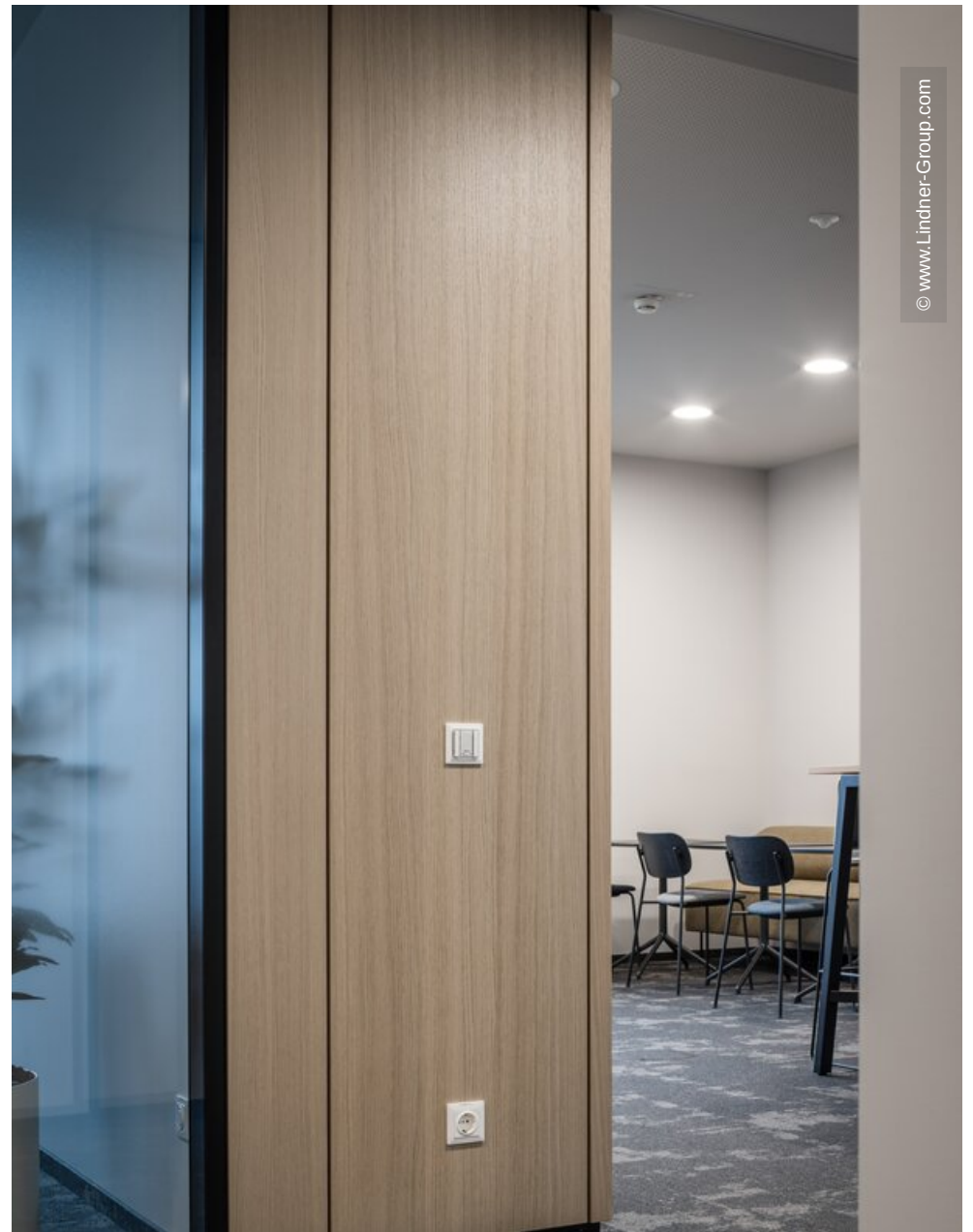
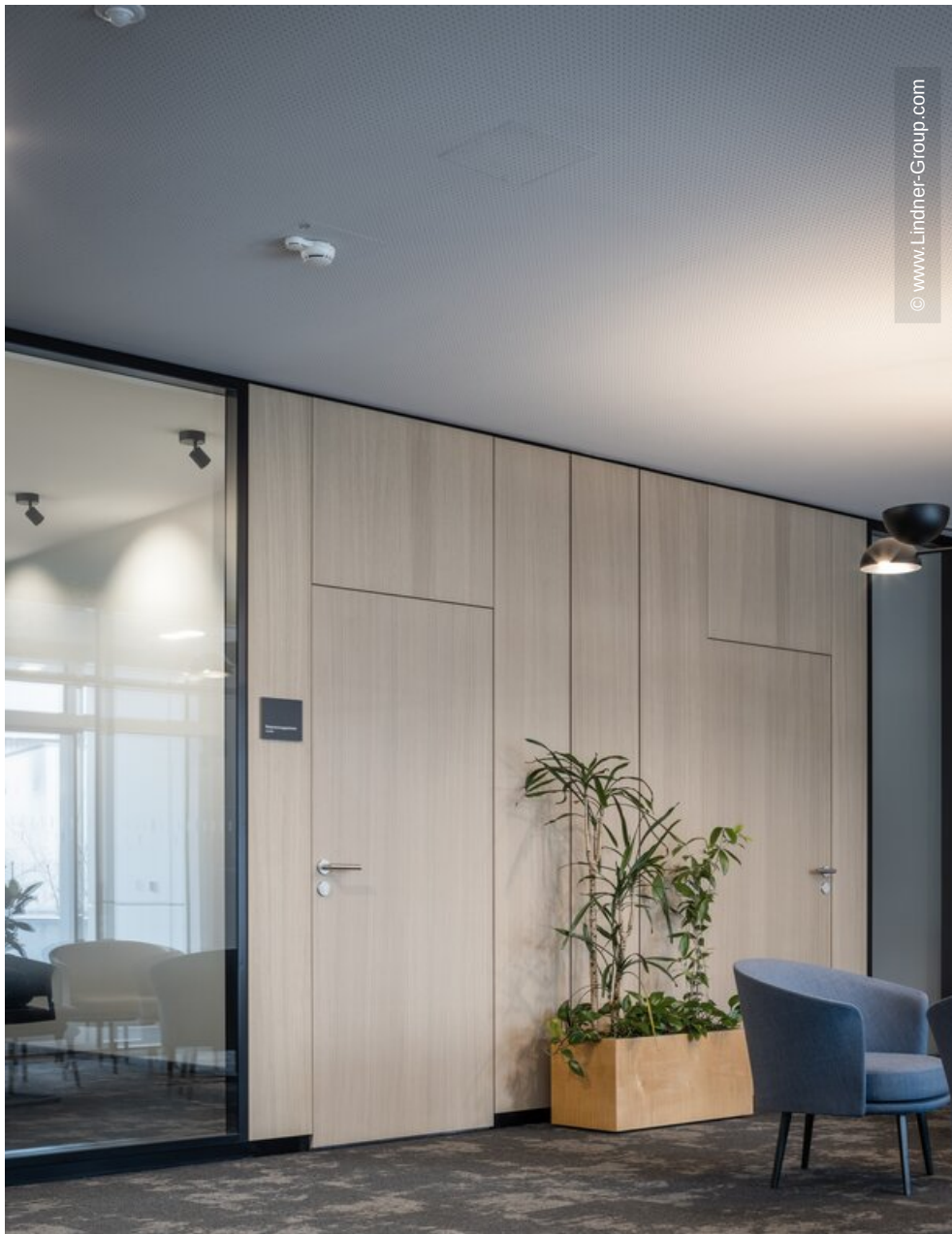
The interior design of the building combines openness with targeted zoning to support different ways of working. A key contribution to this was made by the Lindner Group with high-quality partition systems. The Lindner Life Stereo 125 glass partitions ensure a bright, transparent atmosphere – without compromising on effective sound insulation. Additionally, Lindner Logic 100 Timber wooden partitions bring a warm, natural elegance to the rooms and harmoniously blend into the modern design. The HTB 68 and HTB 41 doors with switch panels integrate perfectly into the overall concept and also offer convenient control options for lighting and technology.

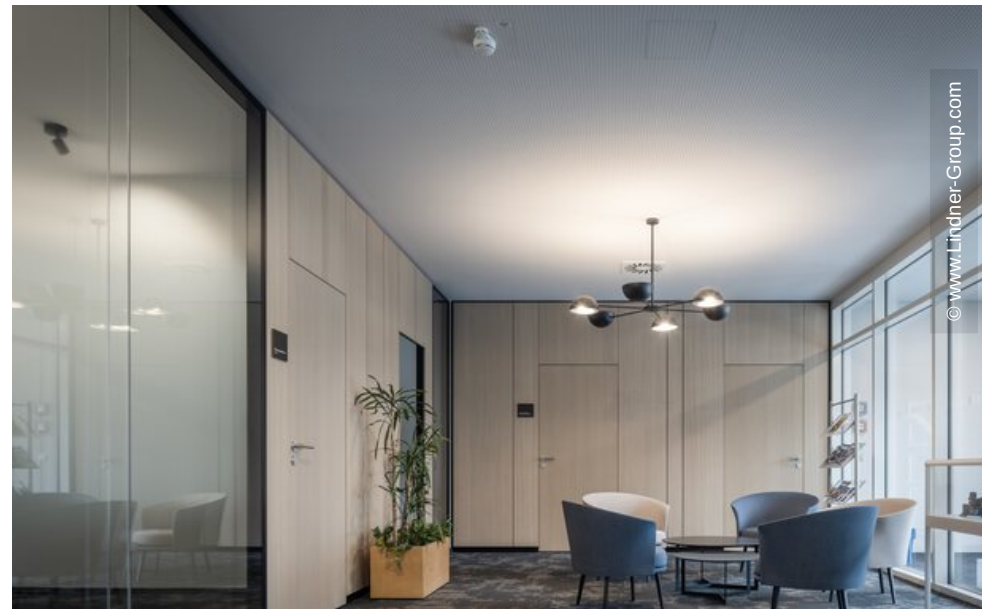
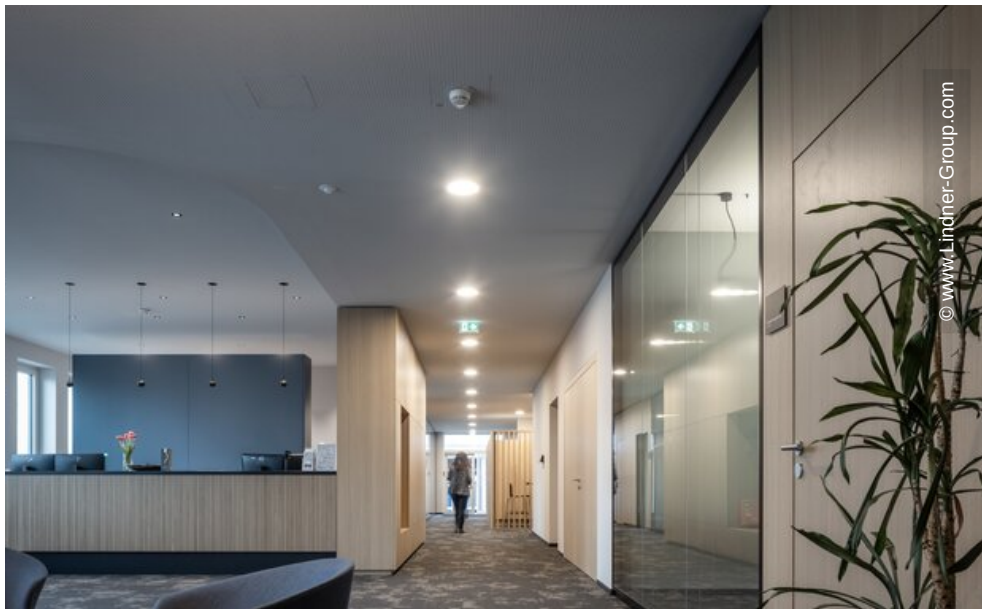
Completed Works

- **Partitions**
 - Partition Systems Glass
 - Lindner Life Stereo 125
 - Partition Systems Full Panel
 - Lindner Logic 100 Timber
- **Doors**
 - Wooden doors

General

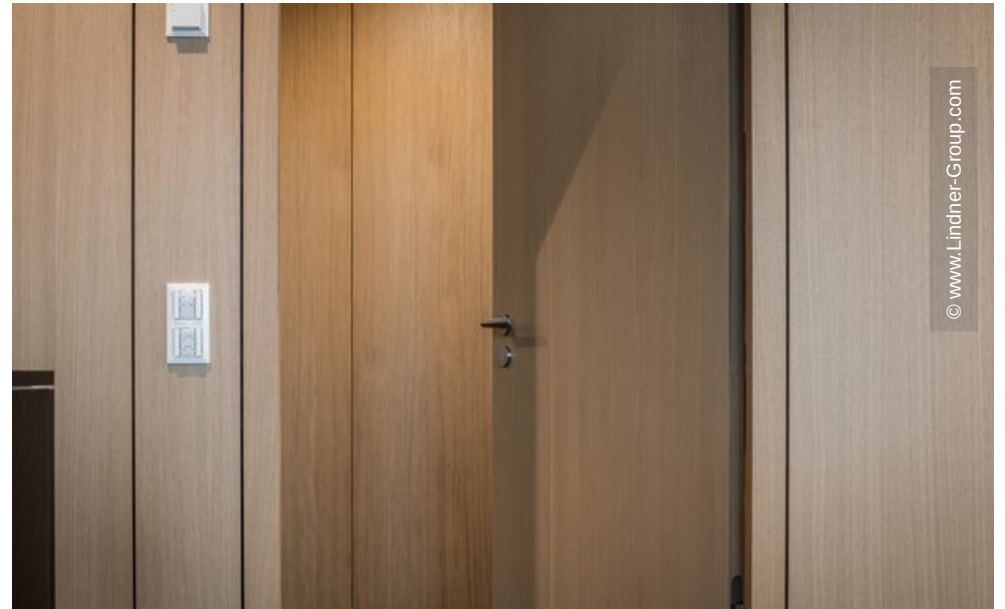
Building Type	Facilities for Meetings, Conventions and Conferences, Office Buildings, Industrial and commercial construction
Company Division	Lindner SE Partitions
Completion	2024
Architect	bernardo bader architekten



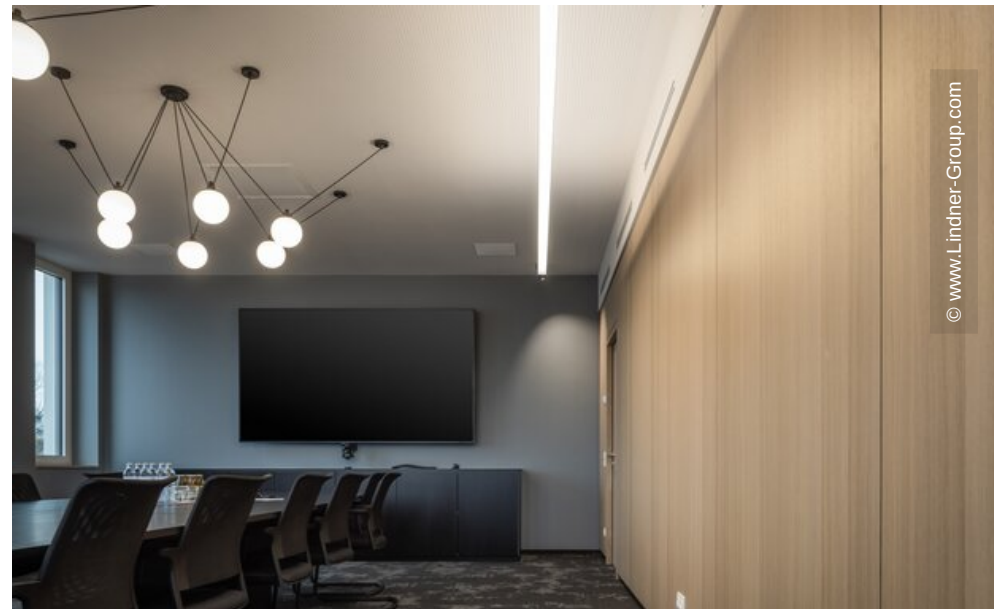




© www.Lindner-Group.com



© www.Lindner-Group.com



© www.Lindner-Group.com