

Tenant Fit-out for Fender Musical Instruments A Tailored Working Environment for Creative Soundscapes

Hamburg, Germany





Project Description

In the heart of Hamburg, a modern office space has been created for Fender Musical Instruments GmbH – a subsidiary of Fender Musical Instruments Corp., specialising in the development of innovative audio software and studio technology.

Through an extensive **tenant fit-out**, the existing office space was expanded and redefined both functionally and aesthetically. The project was delivered by the Lindner Group in close collaboration with Fender as the client, based on the designs of the architectural studio majadesign.

Collaborative, Flexible, Versatile

As the **general contractor**, the Lindner Group supported the project from the outset with comprehensive consultancy and developed bespoke fit-out concepts in close cooperation with the project partners. The key objective was to create an inspiring working environment to foster creative processes. This included open-plan spaces, excellent acoustics, a pleasant indoor climate, and high-quality, well-thought-out design.

From the early design stages, the Lindner Group worked closely with majadesign to ensure that the chosen products and fit-out systems were optimally coordinated. The subsequent implementation planning involved careful coordination of all trades to guarantee efficient and high-quality execution. Special attention was given to structural **fire protection**, which was implemented in accordance with the latest legal standards and coordinated with the relevant authorities and specialist planners.

The Lindner Group provided a complete package of services – from site setup and dismantling works through to turnkey handover. All measures were carried out on schedule and smoothly, despite ongoing operations in the rest of the building and adjacent spaces.

A spirit of partnership and trust among all parties formed the basis for the seamless delivery of the project. This ensured that Fender's specific requirements were precisely realised and integrated into a cohesive overall concept.

Flexible Spatial Design and High-Quality Materials

One of the standout features is the Lindner Life Pure 620 glass partition with single glazing, which combines a slender profile design with effective sound insulation. This creates a modern, light-filled environment that promotes both concentration and communication.

Drywall systems for walls and ceilings allow maximum design freedom and flexible space planning. Decorative wooden slats provide stylish visual accents, enhancing the overall aesthetic while also improving room acoustics. The design is further enriched by hand-applied plaster finishes in a real concrete look on the drywall partitions, giving the spaces added depth.

The choice of carpet flooring was also deliberate: it impresses not only with its contemporary design but also meets functional requirements such as durability and acoustic performance.

Climate Comfort and Intelligent Lighting

A pleasant indoor climate is ensured by the energy-efficient Lindner Plafotherm® DS 320 chilled ceiling panels, which provide even temperature distribution across all working areas. The long-lasting, low-maintenance COLOURline coating in elegant white or deep black lends the ceiling elements a stylish, timeless appearance.

Modular, energy-efficient PL 3 suspended light channels from the Lindner lighting factory ensure consistent illumination throughout the offices. The lighting concept is complemented by Loop suspended luminaires, adding a personal touch to the space. Additional design-oriented lighting systems underline the premium character and complete the holistic lighting concept.

Technical Implementation and Functional Details

As part of the fit-out, high-quality tea kitchens were installed as central hubs for communication.

The sanitary areas were also designed with comfort and contemporary aesthetics in mind. Custom-made metalwork and locksmith services – including door frames, handrails, and bespoke fittings – complete the high-end interior finish. Newly installed electrical systems provide a future-proof, high-performance IT infrastructure.

General

Concept	A Tailored Working Environment for Creative Soundscapes
Building Type	Office buildings
Company Division	Lindner SE Fit-Out North.Northwest Germany
Completion	2024 - 2025
Architect	maja design & architektur
Client	Fender Musical Instruments GmbH

Completed Works

PL 3

- **Tenant fit-out**

- Implementation planning
- Building services insulation
- Construction site equipment
- Floor covering works
- Electrical works
- Screed works
- Tiling works
- Plasterboard ceiling systems
- Plasterboard partition systems
- Painting works
- Metalworks
- Cleaning works
- Dismantling works
- Sanitary work
- Locksmith works
- Other design services
- Kitchenette
- Carpentry
- Dry construction works

- **Building services engineering**

- **Ceilings**

- Heated and Chilled Canopy Ceilings
 - Plafotherm® DS 320
- Powder Coating
 - COLOURline

- **Partitions**

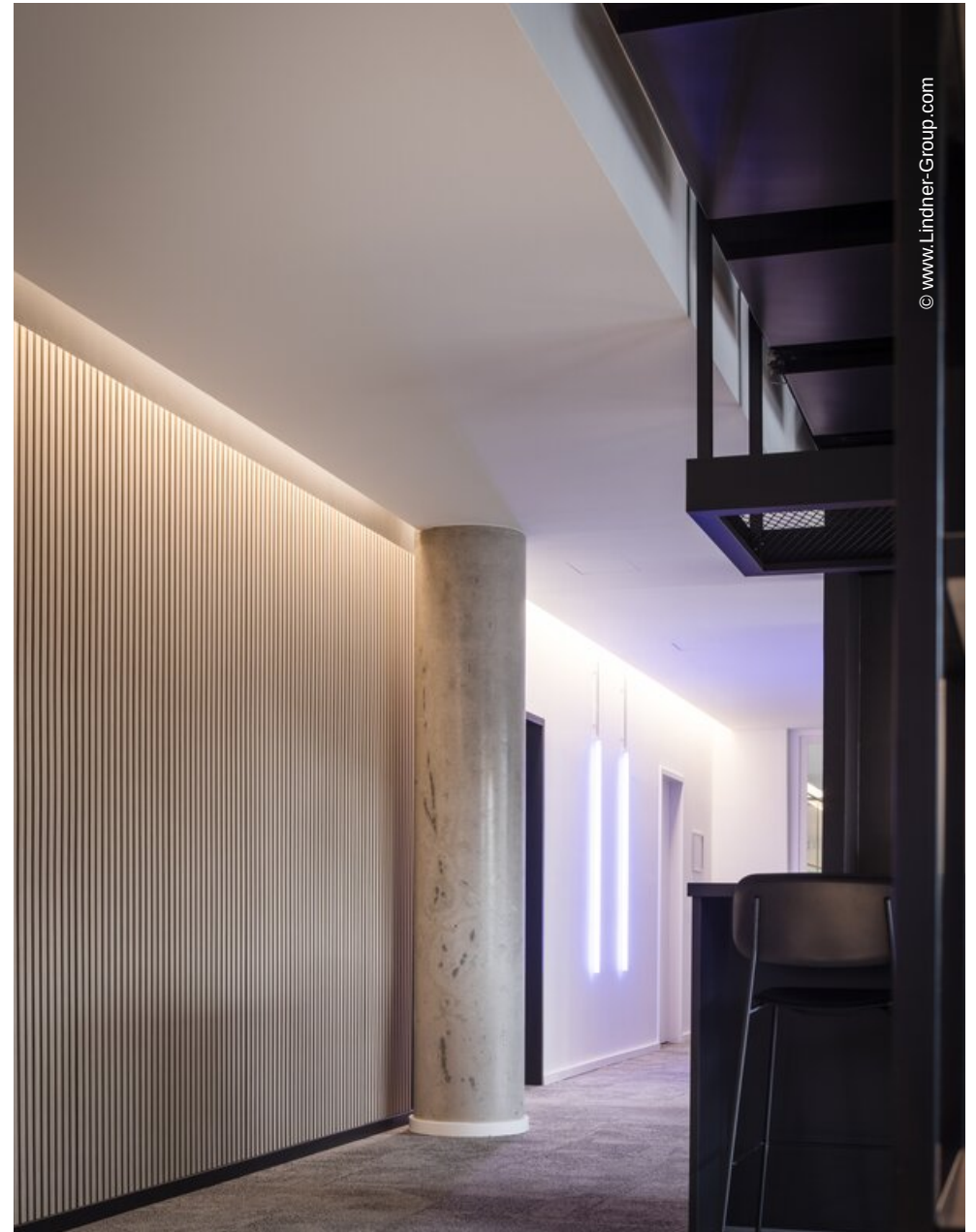
- Partition Systems Glass
 - Lindner Life Pure 620

- **Luminaires**

- Suspended luminaires
 - Loop
- Light channels



© www.Lindner-Group.com



© www.Lindner-Group.com



© www.Lindner-Group.com



© www.Lindner-Group.com



© www.Lindner-Group.com



© www.Lindner-Group.com



