

AIDAsol Ship Fit-Out

Modern Cruise Ship Interior Outfitting

Papenburg, Germany





Project Description

The AIDAsol, a modern cruise ship of AIDA Cruises’ modified Sphinx class, measures 253 meters in length and 32 meters in width. Between 2010 and 2013, one ship of this class was delivered each year from MEYER WERFT. Sister ships include the AIDAbla, AIDamar, and AIDastella. The second series of the Sphinx class features an additional half deck, significantly expanding the wellness areas and enhancing passenger comfort. A striking architectural feature is the Theatrium – a glass funnel at the center of the ship spanning its full width, serving as the main gathering and social space for guests.

Turnkey Interior Fit-Out by Lindner

For the complete [ship interior fit-out](#) of the AIDAsol, MEYER WERFT relied on the expertise of the Lindner Group. Lindner managed the production, and installation of the Market Restaurant on Deck 9 as well as the AIDA Bar and Lounge on Deck 10. All services were provided from a single source, ensuring a seamless and high-quality interior fit-out.

Wall, Ceiling, and Flooring Systems for Premium Quality

The interior outfitting included high-quality wall and ceiling cladding in various designs, durable flooring, column coverings, built-in furniture, custom furniture, and upholstered furniture. Specially manufactured B15 fire-rated doors and inspection hatches completed the interior. In the bar areas, Lindner installed different ceiling systems such as plaster stucco ceilings, lightweight ceilings, and metal ceilings, while the restaurant

areas featured metal ceilings, tiled surfaces, and plaster finishes for a stylish and durable interior.

Lindner Products for Maritime Interior Construction

A key component of the project was the use of Lindner COMP+ aluminum lightweight panels. Their low weight, high stability, and corrosion resistance make them ideal for ship interiors. In addition, custom-made furniture and components were produced in Lindner’s own facilities to ensure maximum precision and superior design quality.

Functional and Aesthetic Interiors for Cruise Ships

The interior fit-out of the AIDAsol highlights Lindner’s maritime expertise: precise execution, durable materials, and functional design create interiors that provide the highest level of comfort at sea. The combination of design, quality, and tailored solutions makes the AIDAsol’s interior a benchmark for modern cruise ship outfitting.

General

Concept	Modern Cruise Ship Interior Outfitting
Building Type	Ship Fit-out
Company Division	Lindner SE Interior
Completion	2010 - 2013
Client	Meyer Werft GmbH



Completed Works

- **General Contracting**

Floor covering works

Furniture

- **Ceilings**

Metal Ceilings

- **Partitions**

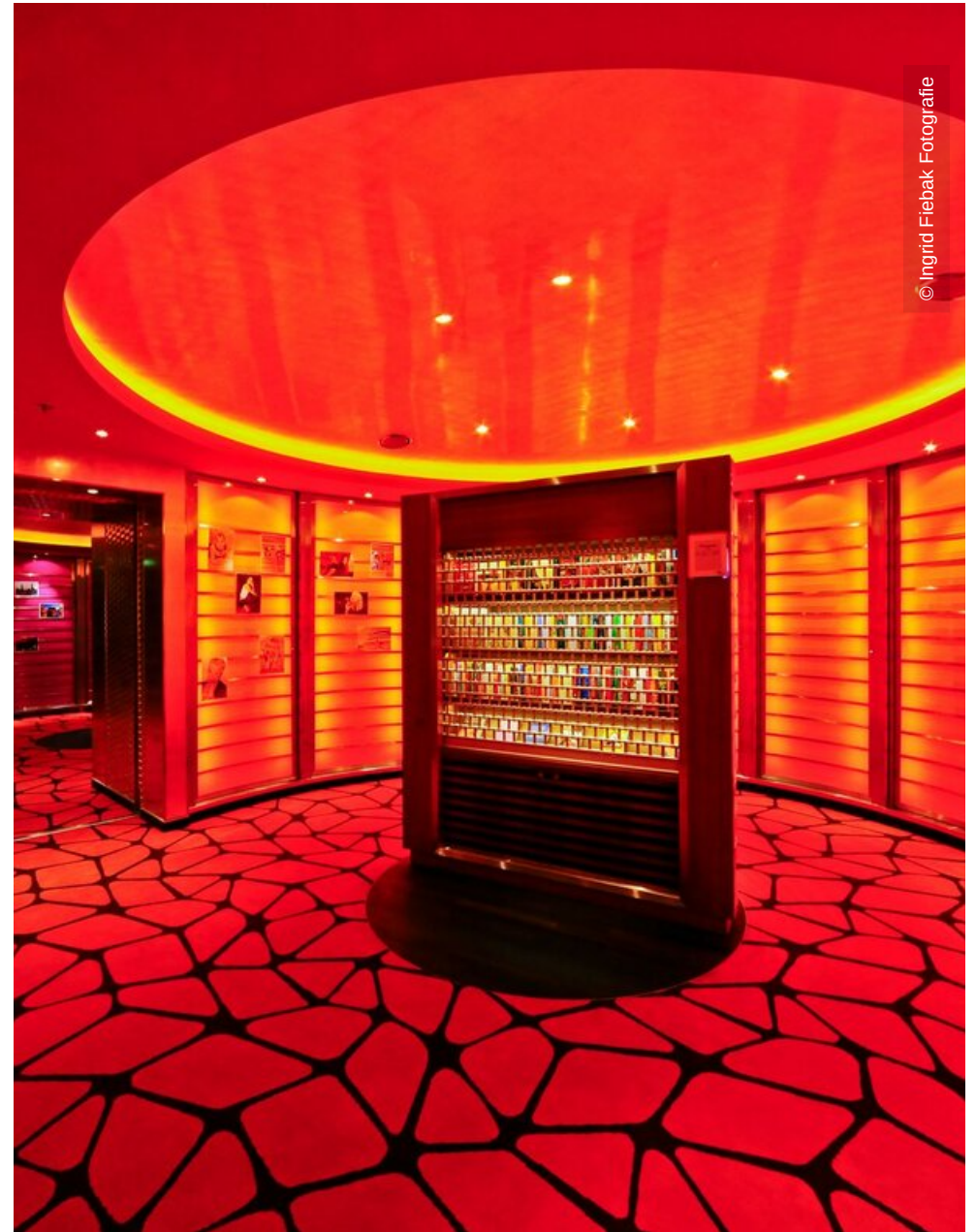
Wall and ceiling panels

COMPlacq

- **Doors**



© Ingrid Fiebak Fotografie



© Ingrid Fiebak Fotografie