

Bespoke Lighting Solutions for the Atrium of Vilshofen Grammar School

Vilshofen, Germany

 **Lindner**



© www.Lindner-Group.com

Project Description

The atrium of Vilshofen Grammar School is a fully glazed event space with capacity for almost 700 people. It serves as a multifunctional venue for concerts, receptions, lectures as well as cabaret and theatre performances. To ensure the space meets these diverse requirements, it was equipped with state-of-the-art lighting and sound technology.

Lindner Leuchtenfabrik, based in Mettenbach in Lower Bavaria, developed and supplied three different **LED retrofit** solutions to upgrade the existing spherical luminaires, LED spotlights and pendant lights in an energy-efficient manner. This approach preserved the original lighting concept while bringing it up to the latest technological standards. Professional installation and implementation were carried out by Meusel Elektrotechnik from Passau. The result is a lighting solution that excels both functionally and atmospherically, optimally illuminating every type of event.

Conventional fluorescent lamps are among the largest energy consumers in public buildings. By converting to energy-efficient LED technology, energy savings of up to 80 % can be achieved. Lindner's lighting specialists develop project-specific LED inserts that combine durable technology with low energy consumption. Thanks to precise, custom-fit manufacturing, the inserts can be installed directly into the existing luminaire housings – an efficient solution that conserves resources and helps reduce operating costs.

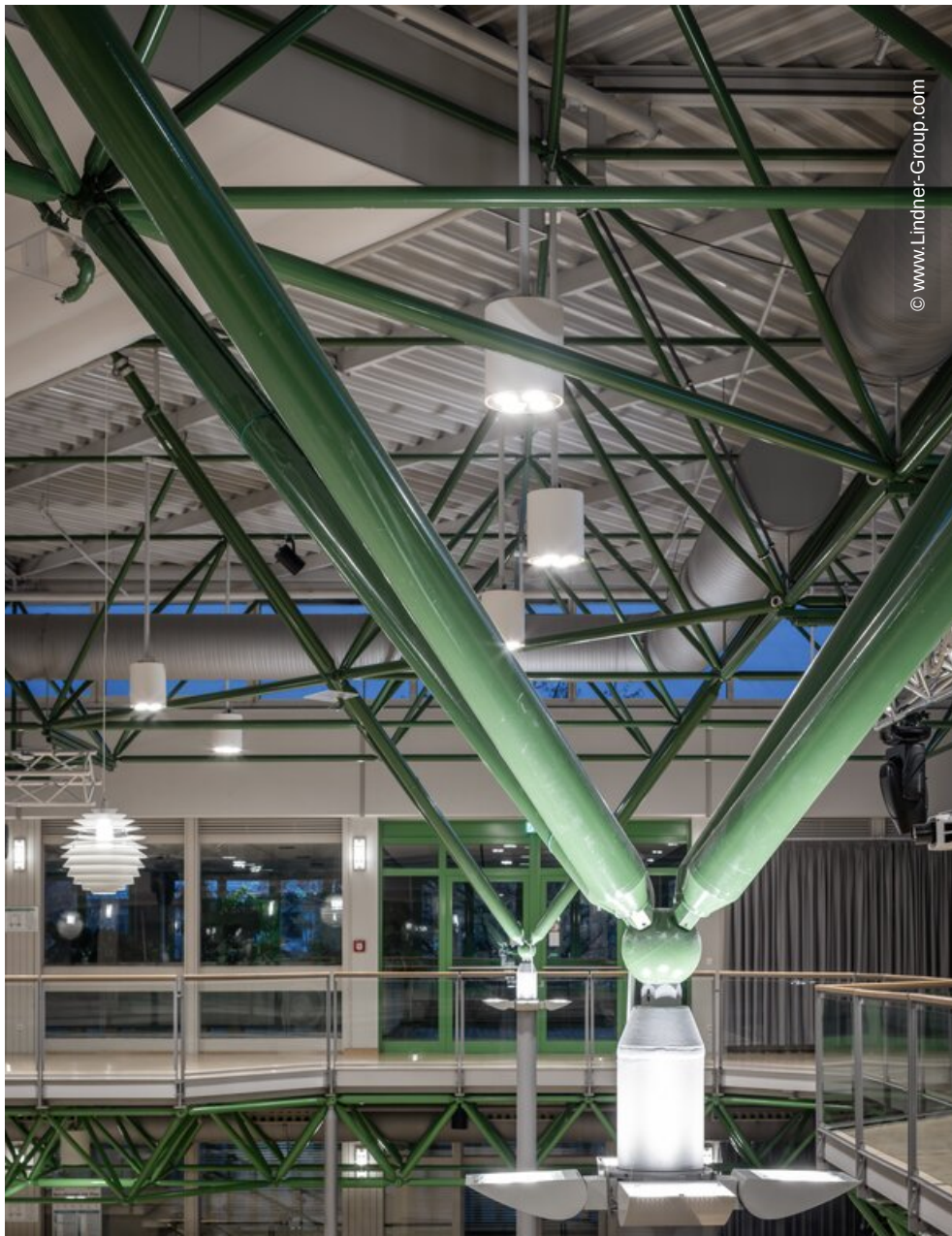
General

Building Type	Schools
Company Division	Lindner SE Luminaires

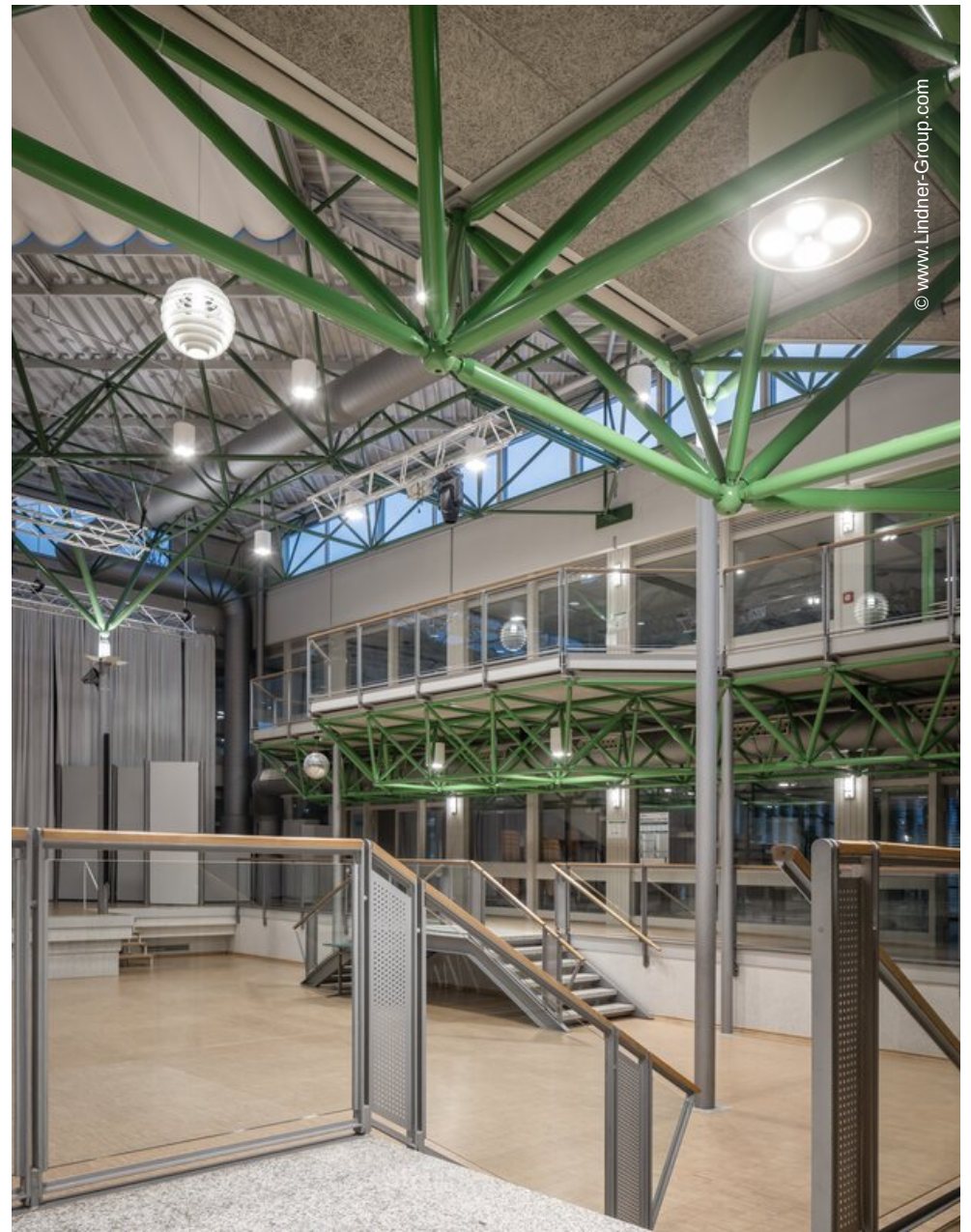
Completion	2025
Client	Landratsamt Passau
Partner	Meusel Elektrotechnik GmbH

Completed Works

- **Luminaires**
 - LED retrofit kit
 - Suspended luminaires



© www.Lindner-Group.com



© www.Lindner-Group.com

