



EUROPEAN SCHOOL AT FASANGARTEN

MUNICH, GERMANY



Description:

The European School in Munich was forced to expand its capacities due to increasing numbers of students. The previous location in the district Neuperlach united a kindergarten, a primary school and a secondary school. The result was an extension concept with a new building in the neighboring district of Fasangarten. This new school building will take up the kindergarten and elementary school, while the secondary school will remain in Neuperlach. The new building has created new capacity for up to 1,500 students. It also includes a cafeteria, a library, a sports hall and a daycare center. Just in time for the start of school in September 2019, the building was put into operation.

The division Interior Fit-out and Furnishings of Lindner SE produced, delivered and installed more than 400 wooden doors for the Fasangarten site of the European School. Considering the diverse room program it was necessary to provide a suitable door for each room. Therefore, the wooden doors have been optimized according to the requirements for their use in classrooms, technical rooms, changing rooms and the canteen.

General:

Concept/Product:	
Building Type:	/
Design and Implementation Planning:	léonwohlhage Gesellschaft von Architekten mbH
Construction Management:	CL MAP GmbH
Company Division:	Lindner SE Interior Fit-out and Furnishings
Completion:	2019



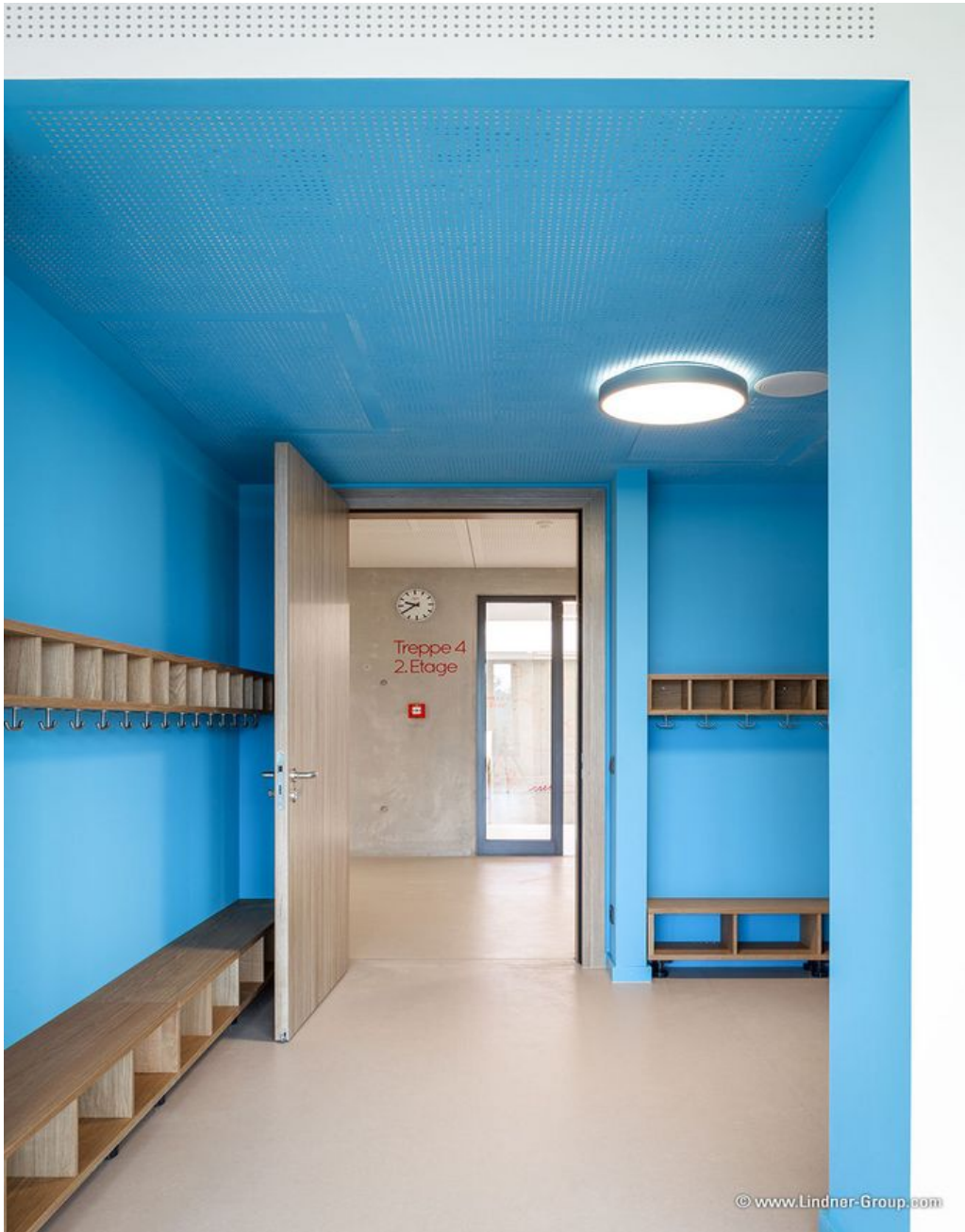
Completed Works:

Wooden doors

Commercial doors

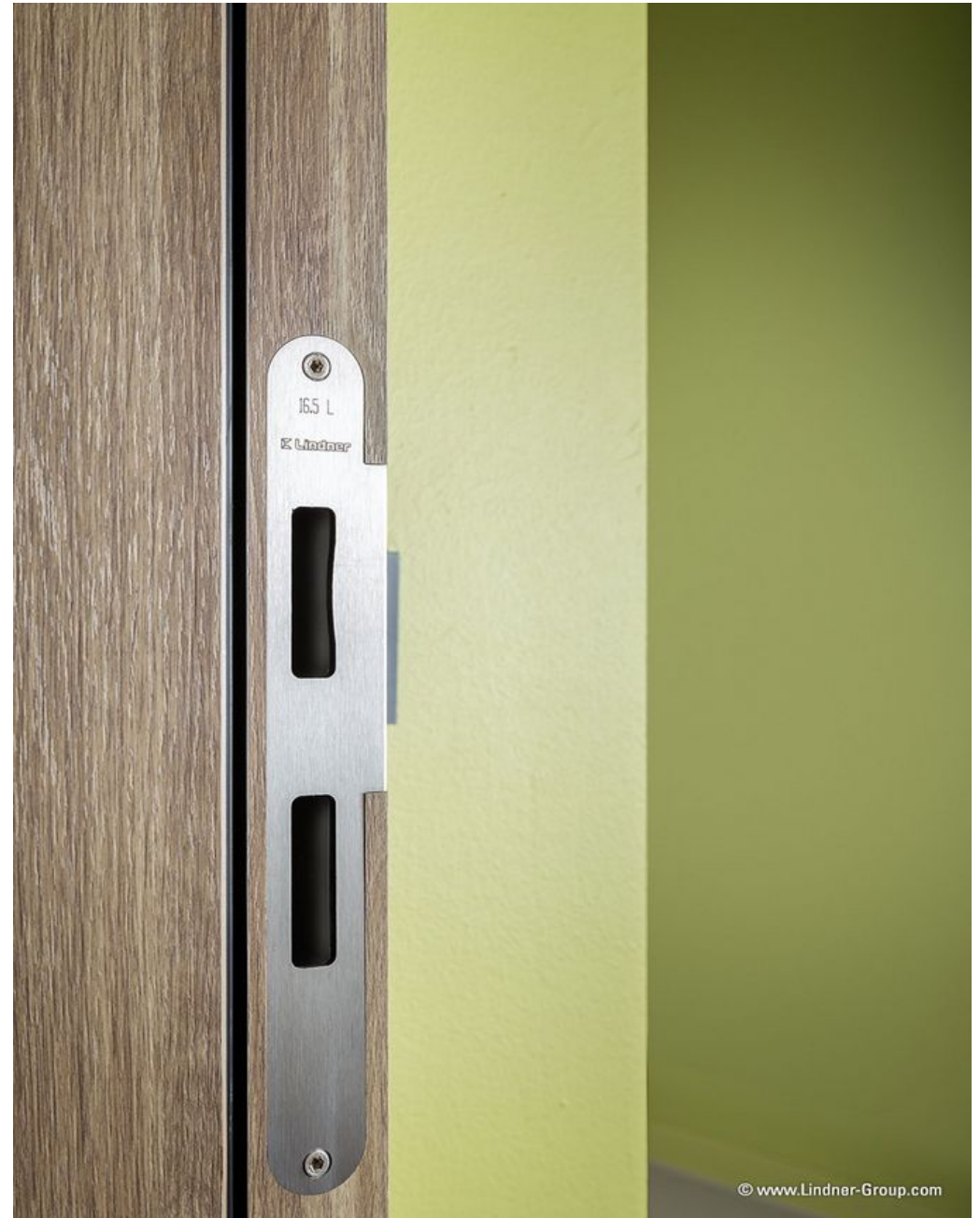








© www.Lindner-Group.com



© www.Lindner-Group.com

