



COAL POWER PLANT DATTELN

DATTELN, GERMANY

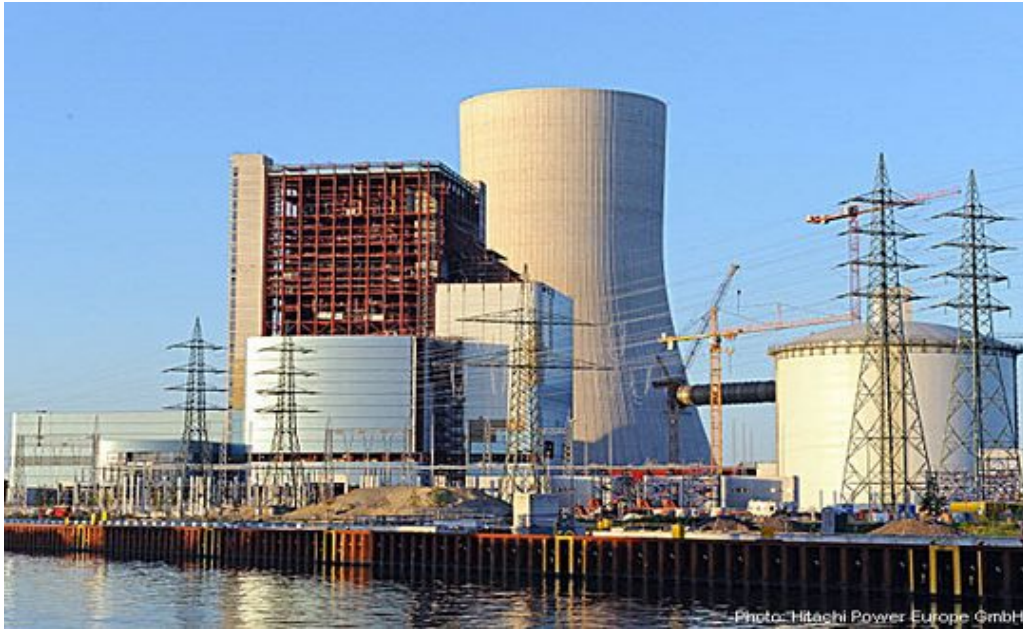


Description:

The new power plant in Datteln will have a total capacity of 1050 MW and therefore is one of Europe`s most powerful coal-fired power plants. Lindner accomplished delivery, preparation and installation of insulation on heating pipes and ventilation ducts.

General:

Concept/Product:	
Building Type:	
Client:	E.ON Kraftwerke GmbH
Architecture:	Hitachi Power Europe GmbH
Company Division:	Lindner Isoliertechnik & Industrieservice GmbH
Completion:	2009



Completed Works:

Insulation of power stations