

The image shows a low-angle, upward-looking view of a modern building's interior. The ceiling is the central focus, featuring a complex, illuminated structure of white, rectangular beams that form a grid of large, irregular polygons. The ceiling is also covered in a pattern of small, dark, diamond-shaped tiles. Several recessed circular lights are visible on the ceiling. The walls are made of dark wood panels, and a large window or glass partition is visible in the background, letting in natural light. The overall atmosphere is clean, modern, and architectural.

155 NORTH WACKER DRIVE

CHICAGO, UNITED STATES



Description:

The 194 meter high skyscraper at 155 North Wacker Drive in Chicago was decorated with the certificate LEED-CS Gold by the U. S. Green Building Council. Lindner produced and fitted the indoor and outdoor ceiling in the entrance area of the building. Special modifications guarantee a high level design combined with a high functionality regarding wind loads and seismic requirements. The LEED Gold Certification attests to the extraordinary quality standard.

General:

Concept/Product:	,
Building Type:	
Client:	The John Buck Company
Architecture:	Goettsch Partners, Inc.
Company Division:	Lindner USA Inc.
Completion:	2010



Completed Works:

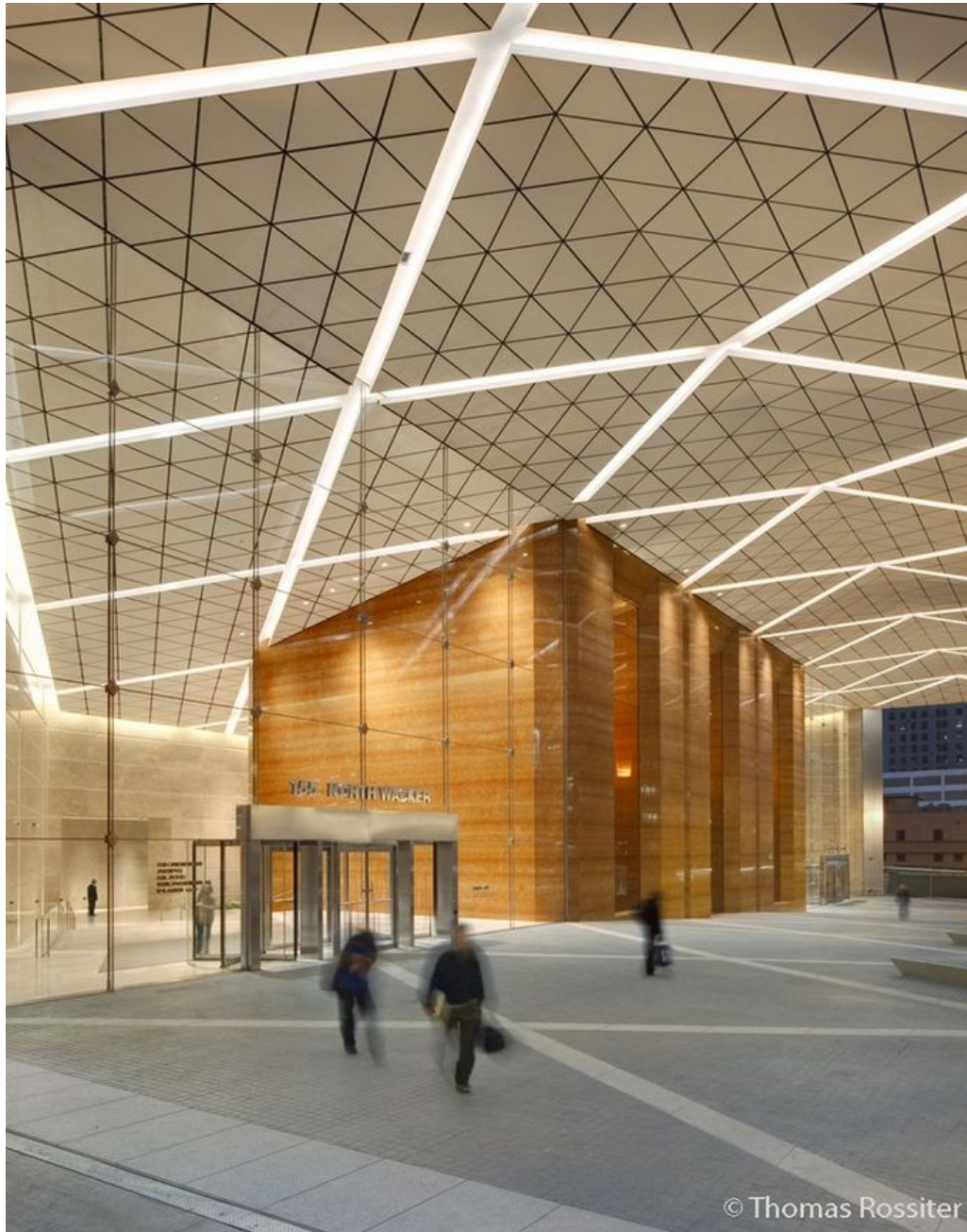
F0 Metal ceiling

LMD-E - Hook-on/Corridor ceilings

Certification system

LEED





© Thomas Rossiter