



ARCONA LIVING ERNST LEITZ HOTEL

WETZLAR, GERMANY



Description:

The arcona LIVING

ERNST LEITZ HOTEL is located in the Leitz Park of the Goethe and optics city of Wetzlar. The world's first 35mm camera, the "initial Leica", had its origins there. A few years ago, the camera manufacturer Leica also returned to this location, at that time with the involvement of the Lindner Group in the interior fit-out of office and production areas. The hotel is located in the immediate vicinity of this Leica location, which is also reflected in its art concept. Everywhere there are reminiscences of the beginnings of photography and visualizations of the mechanics of Leica cameras. The arcona LIVING ERNST LEITZ HOTEL offers its guests among other things 129 high-quality rooms, apartments and suites as well as 350 m² of event and banquet space.

Lindner Mobilier s.r.o. contributed to the interior construction of the arcona LIVING

ERNST LEITZ HOTEL with carpentry work in the form of loose and built-in furniture. Loose furnishings include bedside tables, cabinets, desks, armchairs, bean bags, chaise lounges, sofa beds and coffee tables. The built-in furniture in turn includes bed construction panels, wardrobes, TV furniture and vanities.

General:

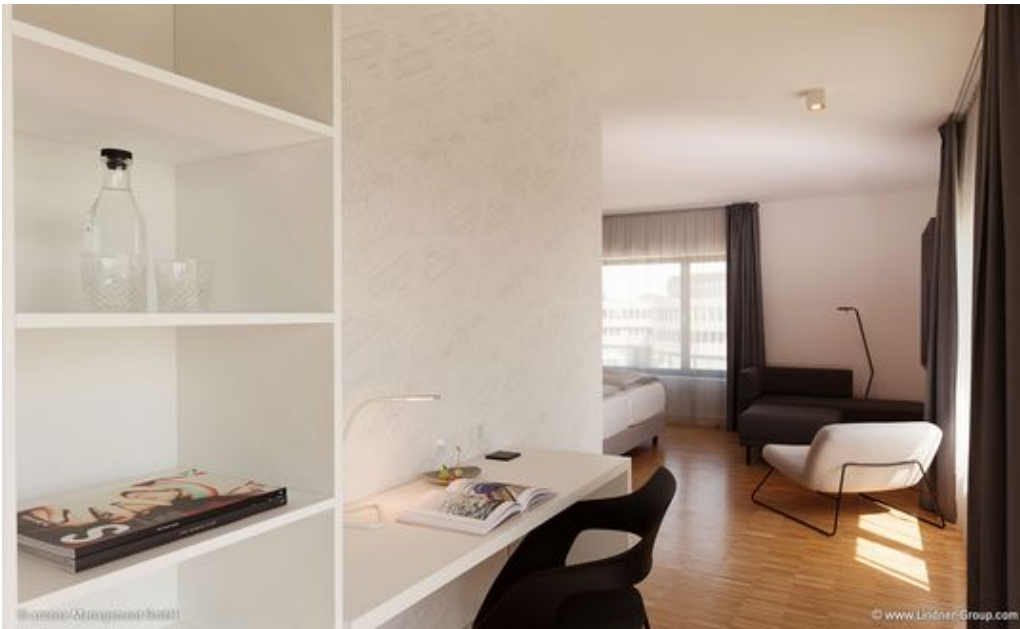
Concept/Product:	
Building Type:	/
Client:	arcona Hotelbetriebs GmbH
Architecture:	WKG Planungsgesellschaft Arch. BDA
Company Division:	Lindner Mobilier s.r.o.
Completion:	2017 - 2018



Completed Works:

Furniture

- Built-in fixtures
- Freestanding furniture







© arcana Management GmbH

© www.Lindner-Group.com



© arcana Management GmbH

© www.Lindner-Group.com